



# INDOFINE Chemical Company, Inc.

121 Stryker Lane, Bldg. 30, Suite 1 • Hillsborough, NJ 08844 • U.S.A.

Phone: (908) 359-6778 • FAX: (908) 359-1179

website: [www.indofinechemical.com](http://www.indofinechemical.com)

e-mail: [chemical@indofinechemical.com](mailto:chemical@indofinechemical.com)

## CERTIFICATE OF ANALYSIS

Catalog Number: 19-366

Product Name: **3(3'-BROMOPHENYL)-6-METHYL-4-PHENYL  
COUMARIN**

Lot Number: 0012305

Chemical Formula: C<sub>22</sub>H<sub>15</sub>BrO<sub>2</sub>

Molecular Weight: 391.27

Melting Point: 203-206°C

Appearance: Cream powder

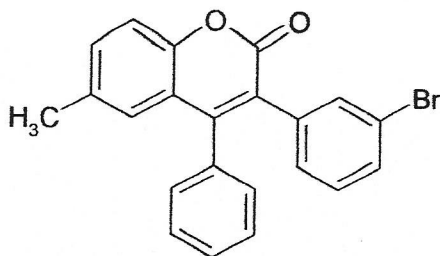
Solubility: Soluble in Chloroform

TLC: Hexane:Ethyl acetate (9:1)

NMR Spectrum: Enclosed (Conforms to the structure)

Storage: Store in a cool, dry place

Purity (HPLC): 99.01%





# INDOFINE Chemical Company, Inc.

121 Stryker Lane, Bldg. 30, Suite 1 • Hillsborough, NJ 08844 • U.S.A.

Phone: (908) 359-6778 • FAX: (908) 359-1179

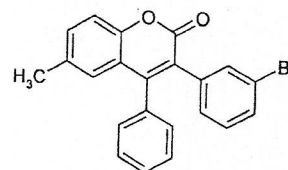
website: [www.indofinechemical.com](http://www.indofinechemical.com)

e-mail: [chemical@indofinechemical.com](mailto:chemical@indofinechemical.com)

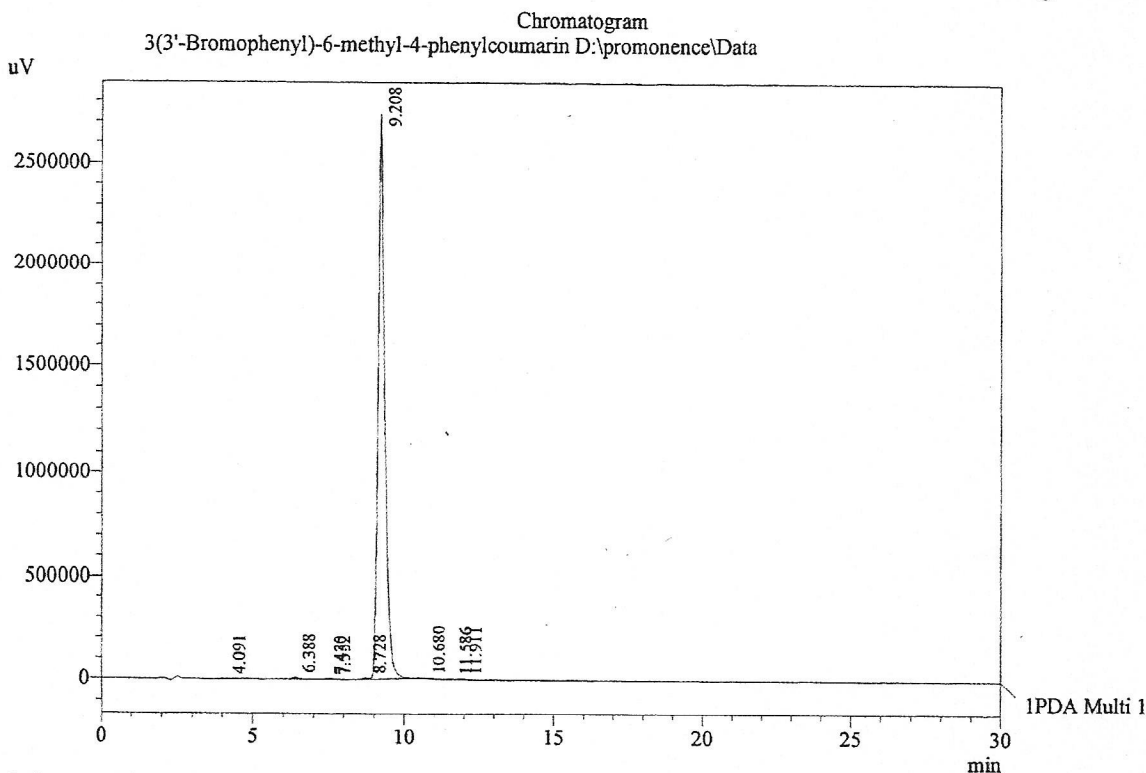
## HPLC ANALYSIS

Acquired by : Sanjeev  
Sample Name : 3(3'-Bromophenyl)-6-methyl-4-phenylcoumarin  
Sample ID : Lot No:0012305  
Injection Volume : 20 uL  
Data Filename : 290813C.lcd  
Method Filename : Linear Isocratic.M.lcm

Catalog No.: 19-366  
Product Name: 3(3'-Bromophenyl)-6-methyl-4-phenylcoumarin  
Lot No.: 0012305



Column : LUNA C-18(2), (250mm x4.6mm 5.0µ)  
Flow : 1.000 mL/min.  
Mobile Phase : A(20% of 0.05% TFA in water) B(80% of Acetonitrile)



1 PDA Multi 1 / 220nm 4nm

PeakTable

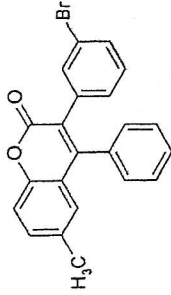
PDA Ch1 220nm 4nm

Peak#	Name	Ret. Time	Area	Area %	Relative Retention Time
1	RT:4.091	4.091	20490	0.05	0.44
2	RT:6.388	6.388	103922	0.25	0.69
3	RT:7.430	7.430	14320	0.03	0.81
4	RT:7.552	7.552	9170	0.02	0.82
5	RT:8.728	8.728	91513	0.22	0.95
6	RT:9.208	9.208	41498003	99.01	1.00
7	RT:10.680	10.680	64213	0.15	1.16
8	RT:11.586	11.586	36926	0.09	1.26
9	RT:11.911	11.911	74393	0.18	1.29
Total			41912949	100.00	



INDOFINE Chemical Company, Inc.  
121 STRYKER LANE  
BLDG. 30, SUITE 1  
HILLSBOROUGH, NJ 08844

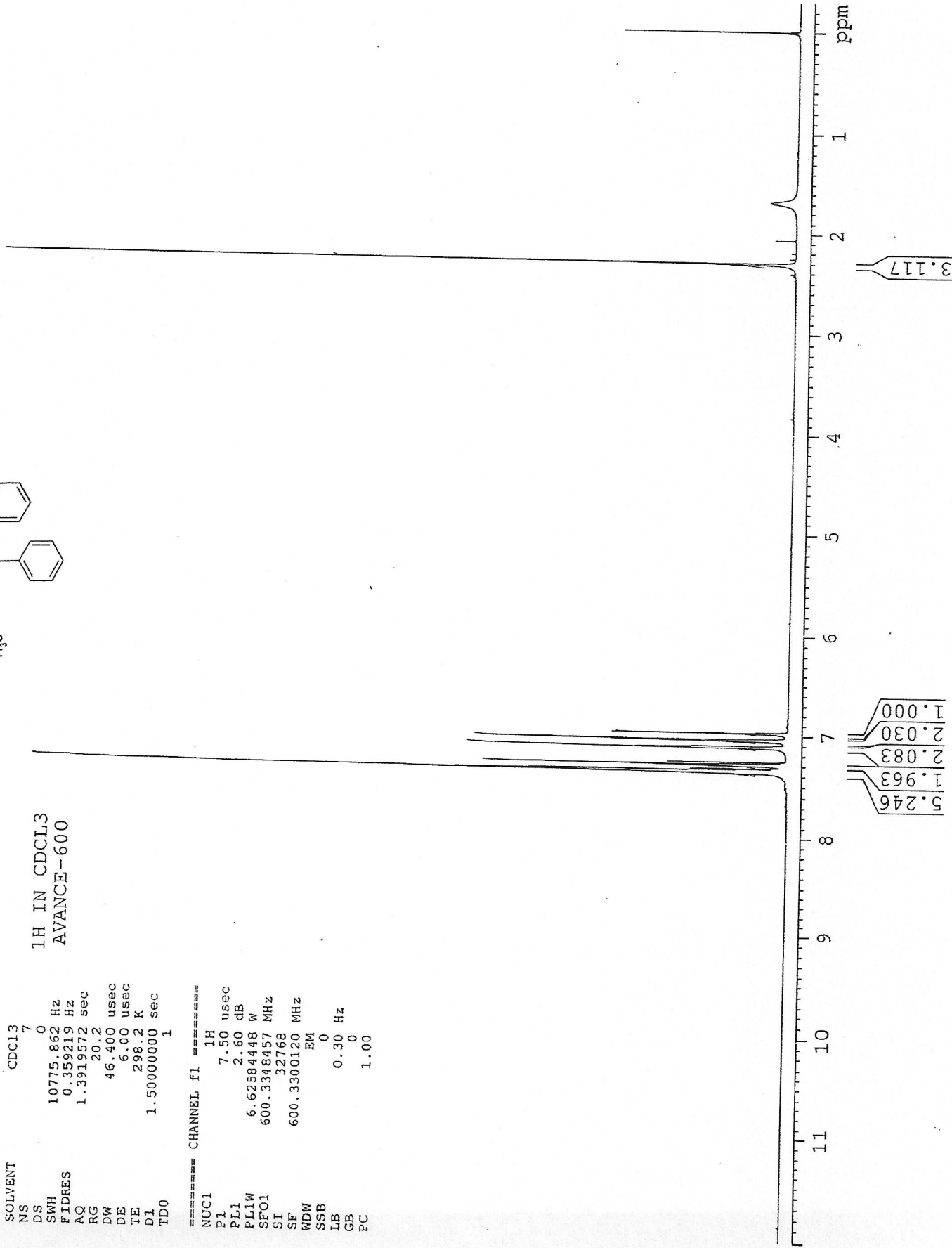
Catalog No.: 19-366  
Product Name: 3-(3'-Bromophenyl)-6-methyl-4-phenylcoumarin  
Lot No.: 0012305



SOLVENT CDC13  
NS 7  
DS 0  
SWH 10775.862 Hz  
FIDRES 0.359219 Hz  
AQ 1.3919572 sec  
RG 20.2  
DW 46.400 usec  
DE 6.00 usec  
TE 298.2 K  
D1 1.50000000 sec  
TD0 1

1H IN CDCL3  
AVANCE-600

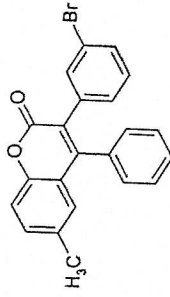
==== CHANNEL f1 =====  
NUC1 1H  
P1 7.50 usec  
PL1 2.60 dB  
PL1W 6.62584448 W  
SF01 600.3348457 MHz  
SI 32768  
SF 600.3300120 MHz  
EM  
SSB 0  
LB 0.30 Hz  
GB 0  
PC 1.00





INDOFINE Chemical Company, Inc.  
121 STRYKER LANE  
BLDG. 30, SUITE 1  
HILLSBOROUGH, NJ 08844

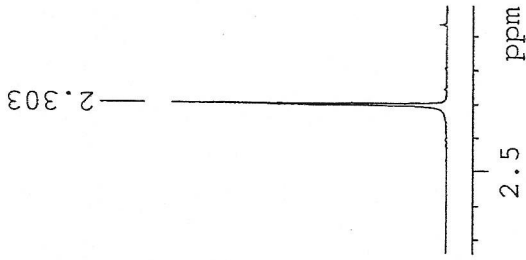
Catalog No.: 19-366  
Product Name: 3-(3'-Bromophenyl)-6-methyl-4-phenylcoumarin  
Lot No.: 0012305



SOLVENT CDC13 7  
NS 0  
DS 0  
SWH 10775.862 Hz  
FIDRES 0.359219 Hz  
AQ 1.3919572 sec  
RG 20.2  
DW 46.400 usec  
DE 6.00 usec  
TE 298.2 K  
D1 1.50000000 sec  
TDO 1

1H IN CDCL3  
AVANCE-600

==== CHANNEL f1 =====  
NUC1 1H  
P1 7.50 usec  
PL1 2.60 dB  
PL1W 6.62584448 W  
SF01 600.3348457 MHz  
SI 32768  
SF 600.3300120 MHz  
EM 0  
WDW 0.30 Hz  
SSB 0  
LB 0  
GB 1.00  
PC



7.373  
7.372  
7.371  
7.370  
7.369  
7.368  
7.367  
7.366  
7.326  
7.302  
7.299  
7.295  
7.289  
7.286  
7.266

7.121  
7.115  
7.109  
7.106

7.049  
7.045  
7.038

6.979

